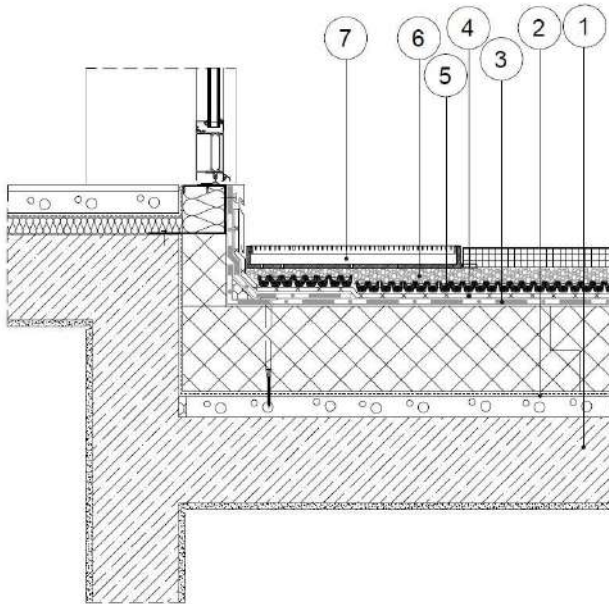


TRS

Terrace grid

ADVANTAGES

- Can be installed in front of open or closed-bottom door-posts
- Easy to clean
- The polypropylene body decreases the heat stress of the underlay layers, and prevents thermal bridging
- Ensures the fast drainage of surface water on roof terraces.



1. Roof construction, 2. Insulation, 3. Root protection layer FLW-400, 4. Protection fleece VLU-300, 5. Drainage board Diadrain-25H, 6. Crushed stone bed, 7. Terrace grid TRS-100

APPLICATION

Doorstep-grille with galvanized mesh grating installable in front of open or closed-bottom door-posts for quick water drainage.

SPECIFICATION

Doorstep-grille with galvanized mesh grating installable in front of open or closed-bottom door-posts for quick water drainage. Material of bottom part: polypropylene; material of grid: dip galvanized steel; available size: 100, 60cm (L) and 50, 40cm (W) and 5cm (H).



TECHNICAL DATA

Height (cm)	From 5
Width (cm)	40/50
Length (cm)	100/60
Material	Polypropylene
Grid	Hot dip galvanized
Colour	RAL 7032 (grid base)



Green Up the Roof!

