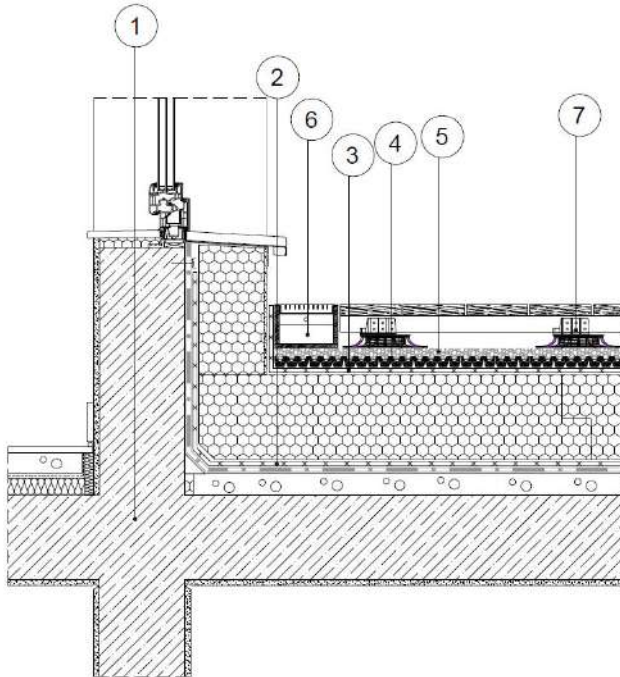


RNF

Terrace channel

ADVANTAGES

- Placed at areas of connection of facades and green roof covered surfaces
- Easy to clean
- The polypropylene body decreases the heat stress of the underlay layers, and avoids thermal bridging
- Multiple plane water drainage due to the open base plates



1. Roof construction, 2. Waterproofing and root resistant layer, 3. Protection fleece VLU-300, 4. Drainage board Diadrain-25H, 5. Crushed stone bed, 6. Terrace channel **RNF-05**, 7. Wooden decking with adjustable pedestals Diaturtle



APPLICATION

The DIADEM® channels are multi-functional water draining elements with open base plates, solving water drainage for surfaces with pedestrian traffic. They serve especially the quick drainage of rain water accumulated at connection of facades and covered surfaces (doors, terrace doors, walls).

SPECIFICATION

Drainage channel with polypropylene base and galvanized grid. Dimensions 5/8/10cmx100x15 cm. Minimum 10 years warranty.



TECHNICAL DATA

Height (cm)	5/8/10
Width (cm)	15
Length (cm)	100
Weight (kg/unit)	3.75
Load class	A15
Material (house)	Polypropylene
Material (grid)	Hot-dip galvanized steel
Colour	RAL 7032 (base of channel)



Green Up the Roof!

